

# CEILING ROSETTE

Installation manual for foam polyurethane  
decorative elements

TOOLS AND MATERIALS



Lead pencil



Glue applicator gun



Rubber putty knife



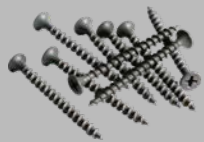
Protective gloves



Fine grain  
abrasive paper



Cotton waste (Cloth)



Self-tapping screw



Acetone.  
White spirit



Fine grain  
water-soluble filler

ADHESIVE



Multipurpose adhesive

The following information is relevant for Evroplast «Adhesives». If you use other adhesives , follow manuals on it's package .

**Work perfomance conditions:** the temperature while performing the works and the next 24 hours must be at least + 8°C. Indoor relative air humidity must be 40%. Required to keep the product in the room for 24 hours at least.

**Requirements to the surface:** prepared surface must be dry, degreased, cleaned from dust. Weak mineral substrates should be pre-strengthened by suitable primer.



1

Drill a hole in the product.



2

Apply the product's outline on the ceiling.



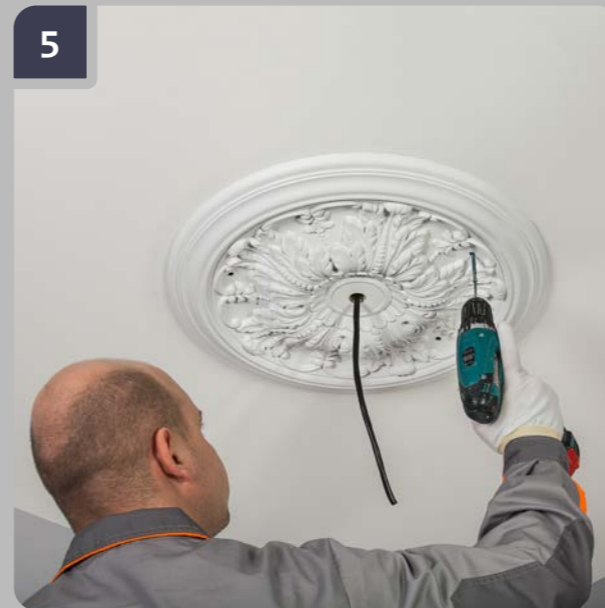
3

Apply evenly on the mounting surface Assembly Adhesive or Multipurpose Adhesive along the whole length. The thickness of the applied adhesive should be 3-5 mm.



4

Attach the item to the place of installation. Push the the item along the whole circular length so the adhesive exudes from the entire plane.



5

Using self-tapping screws fasten the rosette to the ceiling.



6

Immediately after gluing remove the excess of Adhesive with a spatula.



7

When using Assembly Adhesive, remove the remaining excess of adhesive by wiping the areas with a cloth dampened with water; use acetone if Multipurpose Adhesive is used.



8

Fill the area of screw holes with fine-grained, water-soluble filler for interior works.

## Ceiling rosette installation

9



Treat the spackling area with Fine grain abrasive paper.

10



Fill the spaces in the junction area between the rosette and the ceiling, where the adhesive has not shown on a surface.

11



Wipe the area of the junction with a wet cloth. Wet the cloth with water if Assembly Adhesive is used and with Acetone in case of using Multipurpose Adhesive or Adhesive for bonding joints.

12



Paint following the instruction of paint producer the rosette and ceiling in case of need.

[gauidedecor.eu](http://gauidedecor.eu)

GAUDI INSTALL CEILING  
ROSETTE 2021-1